



Company : Santos

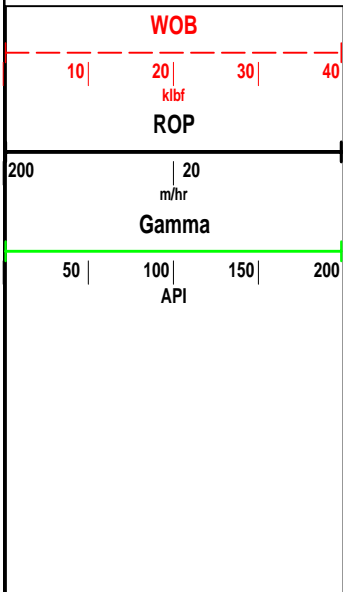
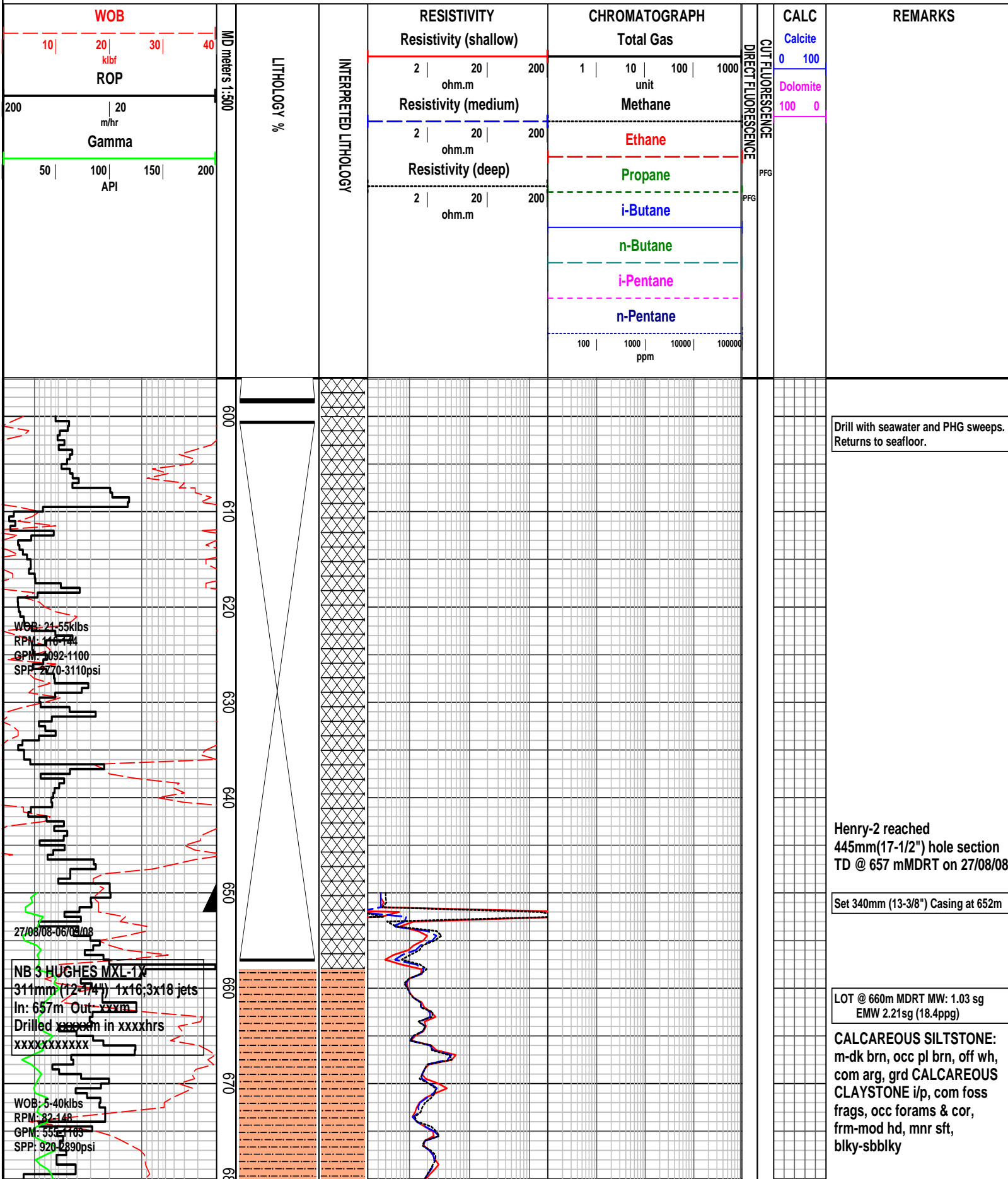
Well : Henry-2

Interval : 596.00 - 1365.24 meters

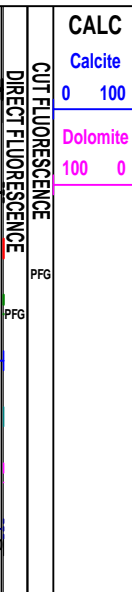
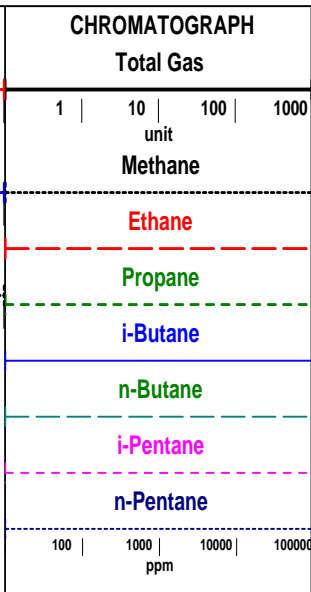
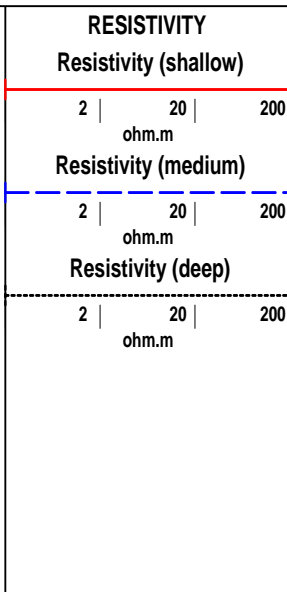
Created : 08/Sep/2008 5:04:53 AM

INTEQ

### HENRY-2 FORMATION EVALUATION LOG



INTERPRETED LITHOLOGY



REMARKS

WOB: 21.55klbs  
RPM: 116.144  
GPM: 1092.1100  
SPP: 2770-3110psi

27/08/08-06/09/08

**NB 3 HUGHES MXL-1X**  
311mm (12-1/4") 1x16;3x18 jets  
In: 657m Out: xxxm  
Drilled xxxm in xxxhrs  
XXXXXXXXXX

WOB: 5.40klbs  
RPM: 82.148  
GPM: 552.185  
SPP: 920-2890psi

Drill with seawater and PHG sweeps.  
Returns to seafloor.

Henry-2 reached  
445mm(17-1/2") hole section  
TD @ 657 mMDRT on 27/08/08

Set 340mm (13-3/8") Casing at 652m

LOT @ 660m MDRT MW: 1.03 sg  
EMW 2.21sg (18.4ppg)

**CALCAREOUS SILTSTONE:**  
m-dk brn, occ pl brn, off wh,  
com arg, grd CALCAREOUS  
CLAYSTONE i/p, com foss  
frags, occ forams & cor,  
frm-mod hd, mnr sft,  
blky-sbblky

Survey at 681.58m Inc: 0.29°  
Azi:157.36° TVD: 681.50m

**CALCAREOUS SILTSTONE:**  
m-dk brn, occ pl brn, off wh,  
com arg, grd **CALCAREOUS**  
**CLAYSTONE** i/p, com foss  
frags, occ forams & cor,  
frm-mod hd, mnr sft,  
blky-sbblky

**SANDSTONE:** m-dk or, rr off  
wh, m-dom v crs, p srt,  
sbrnd-rndd, wk sil cmt, rr off  
wh arg mtrx, com or Fe stn, lse,  
mnr fri-mod hd, gd-v gd inf  
por, no fluor

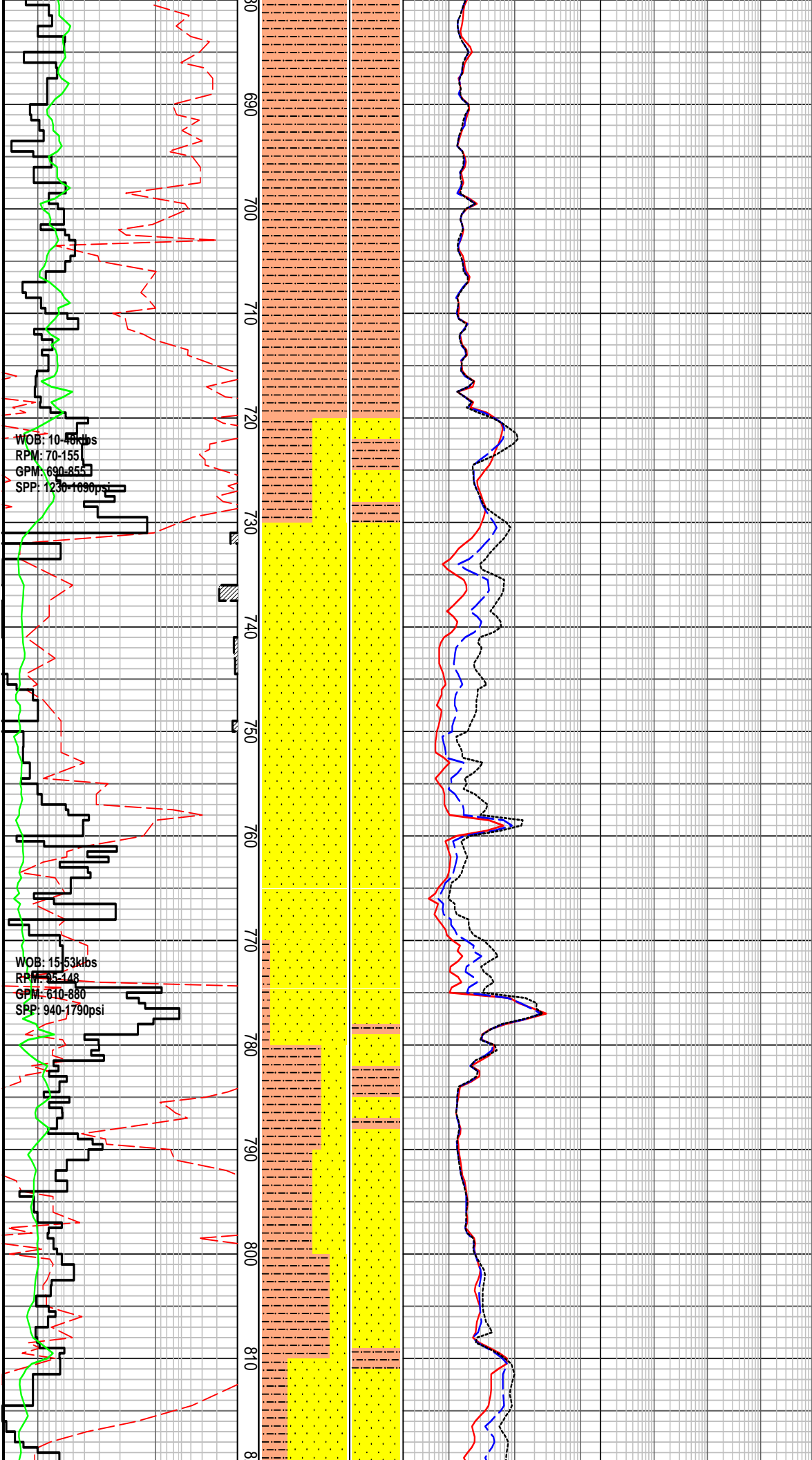
**SANDSTONE:** m-dk or, rr off  
wh, m-dom v crs, p srt,  
sbrnd-rndd, wk sil cmt, rr off  
wh arg mtrx, com or Fe stn,  
lse, mnr fri-mod hd, gd-v gd  
inf por, no fluor

Survey at 768.28m Inc: 0.83°  
Azi: 157.79° TVD: 768.20m

**SILTSTONE:** pl-m grn, pl gry,  
gry grn, off wh, arg, mnr glauc  
gr, rr pyr nods, frm-mod hd,  
dis i/p, sbblky, mnr amor

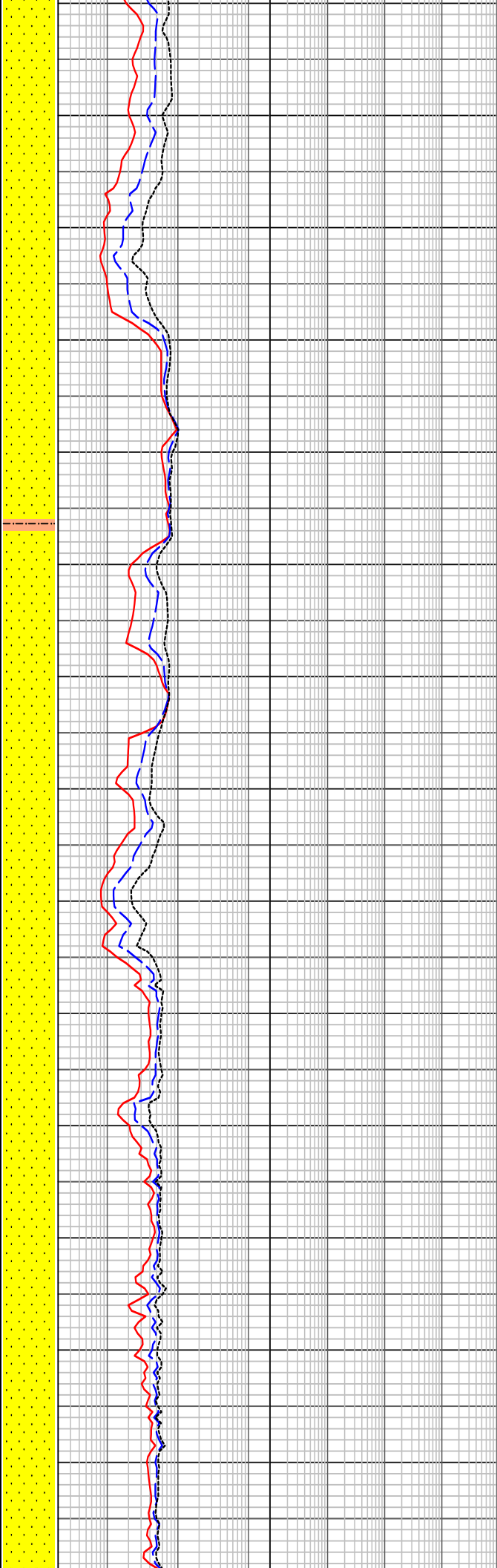
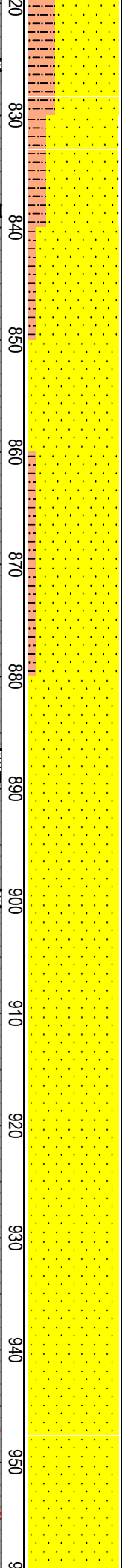
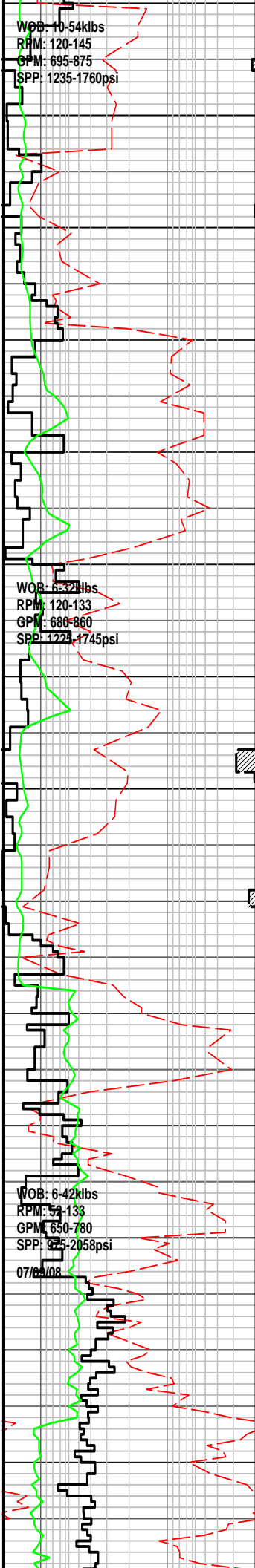
MW: 1.19 FV: 75 PV: 21 YP: 31  
GELS: 9/15/21 SOL: 5.22  
pH: 8.5 Ck: 8.5 CL: 66000

**SANDSTONE:** off wh-pl gry,  
clr-trnsl, crs-v crs, m i/p, mod  
srt, sbang-rndd, wk sil cmt,  
occ off wh arg mtrx occ pyr  
nods, lse gr, mnr fri, fr-gd inf  
por, no fluor



WOB: 10-48kbs  
RPM: 70-155  
GPM: 690-855  
SPP: 1230-1090psi

WOB: 15-53kbs  
RPM: 95-148  
GPM: 610-880  
SPP: 940-1790psi



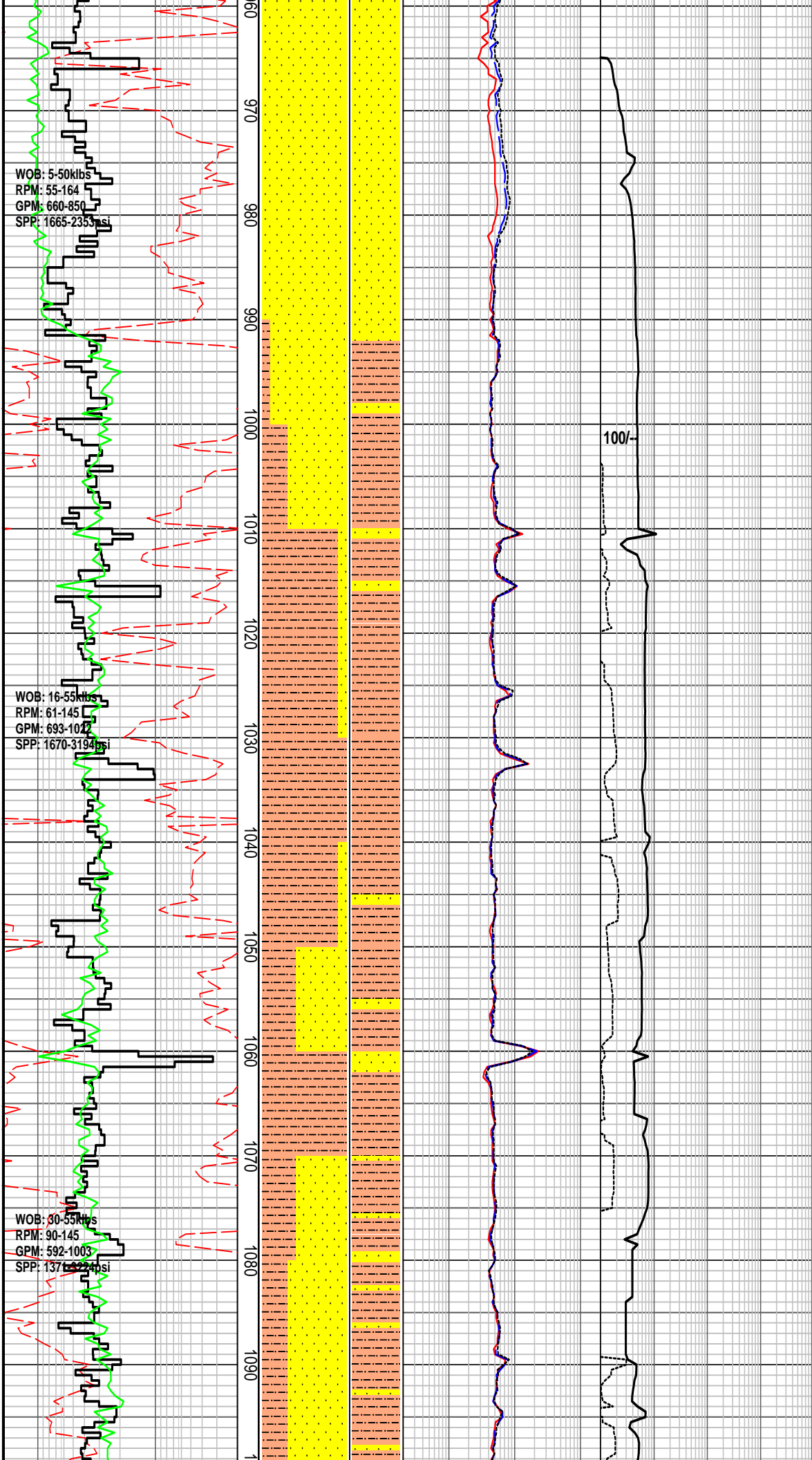
SANDSTONE: off wh-pl gry, clr-trnsl, crs-v crs, m i/p, mod srt, sbang-rnidd, wk sil cmt, occ off wh arg mtrx occ pyr nods, lse gr, mnfr fri, fr-gd inf por, no fluor

SANDSTONE: off wh-pl gry, clr-trnsl, crs-v crs, m i/p, mod srt, sbang-rnidd, wk sil cmt, occ off wh arg mtrx occ pyr nods, lse gr, mnfr fri, fr-gd inf por, no fluor

Survey at 883.67m Inc: 3.87° Azi: 140.62° TVD: 883.50m

SANDSTONE: lt brnsh gry i/p, clr-trnsl, f- crs, p srt, sbang-sbrnidd, nil cmt, rr lt brnsh gry arg mtrx, rr nod pyr, tr mic, tr liths, pred lse qtz gr, gd inf por, no fluor

SANDSTONE: lt brnsh gry i/p, clr-trnsl, f- crs, p srt, sbang-sbrnidd, nil cmt, rr lt brnsh gry arg mtrx, rr nod pyr, tr mic, tr liths, pred lse qtz gr, gd inf por, no fluor



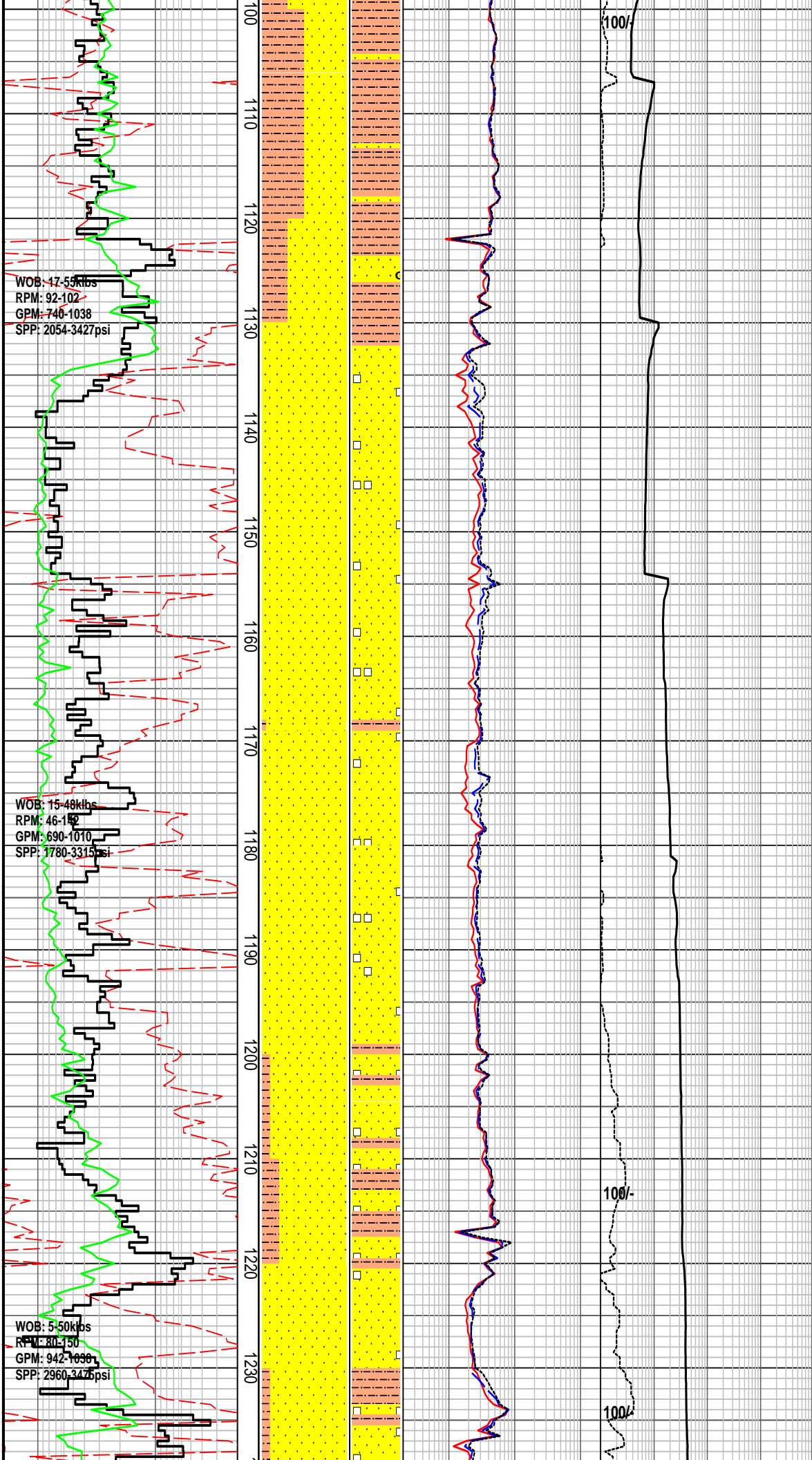
**SANDSTONE:** lt brnsh gry i/p, clr-trnsl, f- crs, p srt, sbang-sbrndd, nil cmt, rr lt brnsh gry arg mtrx, rr nod pyr, tr mic, tr liths, pred lse qtz gr, gd inf por, no fluor

Survey at 998.24m Inc: 13.64°  
Azi: 148.11° TVD: 996.9m

**SILTSTONE:** m brn, m brnsh gry, arg, loc vf aren, tr f carb spks, tr vf glauc, sft-frm, disp i/p, sbbllky

**SILTSTONE:** m brn, m brnsh gry, arg, loc vf aren, mnr carb spks, tr vf glauc, sft-frm, sbbllky

**SANDSTONE:** off wh, lt brnsh gry, clr-trnsl, f-m gr, tr crs, pr srt, sbang-sbrndd, mnr wk calc cmt, mnr lt brnsh gry arg mtrx, tr liths, tr carb spks, p-fr inf por, no fluor



Survey at 1112.80m Inc: 24.41°  
 Azi:135.23° TVD: 1104.9m

WOB: 17-55klbs  
 RPM: 92-102  
 GPM: 746-1038  
 SPP: 2054-3427psi

**SANDSTONE:** lt gry, lt brnsh gry, grnsh gry, clr-trnsl, vf-f gr, rr m-crs, sbang-sbrnidd, p srt, rr sil cmt, com nod pyr, tr liths, fri-mod hd vf agg, lse-med crs gr, p inf por, no fluor

WOB: 15-48klbs  
 RPM: 46-152  
 GPM: 690-1010  
 SPP: 1780-3315psi

**SANDSTONE:** lt gry, lt brnsh gry, grnsh gry, clr-trnsl, vf-f gr, rr m-crs, sbang-sbrnidd, p srt, rr sil cmt, com nod pyr, tr liths, fri-mod hd vf agg, lse-med crs gr, p inf por, no fluor

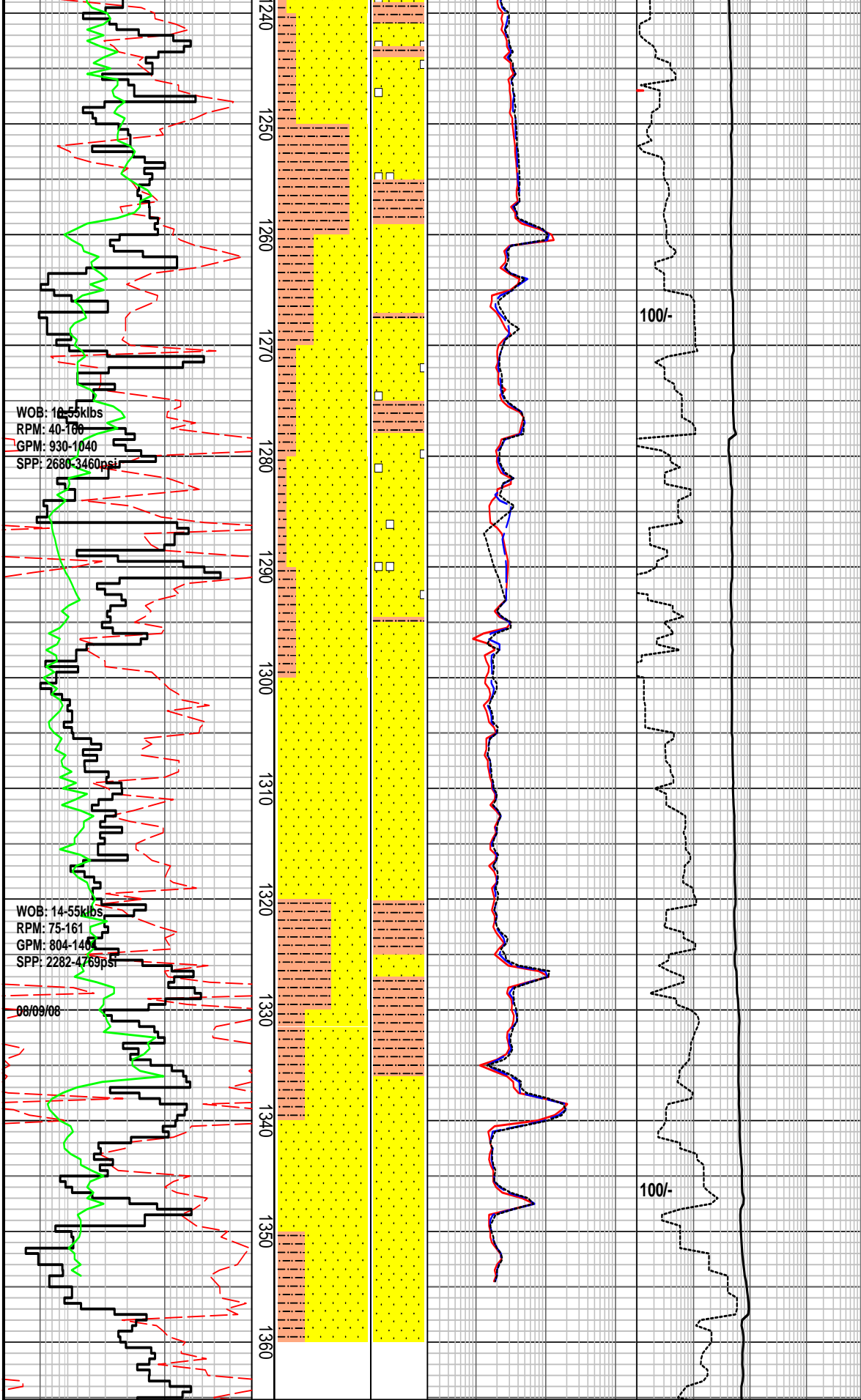
**SANDSTONE:** lt gry, lt brnsh gry, grnsh gry, clr-trnsl, vf-f gr, rr m-crs, sbang-sbrnidd, p srt, rr sil cmt, com nod pyr, tr liths, fri-mod hd vf agg, lse-med crs gr, p inf por, no fluor

Survey at 1198.94m Inc: 28.27°  
 Azi:128.23° TVD: 1182.0m

**SILTSTONE:** m-dk brn gry, arg, mnr lith, disp-v sft, occ frm, amor, occ sbblk

WOB: 5-50klbs  
 RPM: 80-150  
 GPM: 942-1030  
 SPP: 2960-3476psi

**SANDSTONE:** lt gry, lt brnsh gry, grnsh gry, clr-trnsl, vf-f gr, rr m-crs, sbang-sbrnidd, p srt, rr sil cmt, com nod pyr, tr liths, fri-mod hd vf agg, lse-med crs gr, p inf por, no fluor



**SILTSTONE:** m-dom dk brn, mnr brn gry, arg i/p, mnr micmic, occ carb spks & frags, v sft-dis, amor, sbblky i/p

Survey at 1257.97m Inc: 31.15°  
Azi:125.30° TVD: 1233.2m

**SANDSTONE:** mnr pl brn-pl gry, clr-trnsl, f-m, mnr crs, mod srt, sbang-sbrnnd, wk sil cmt, mnr off wh arg mtrx, com pyr nods, lse cln gr, mnr fri, fr inf por, p vis por, no fluor

MW: 1.19 FV: 75 PV: 21 YP: 31  
GELS: 9/15/21 SOL: 5.22  
pH: 8.5 Ck: 8.5 CL: 66000

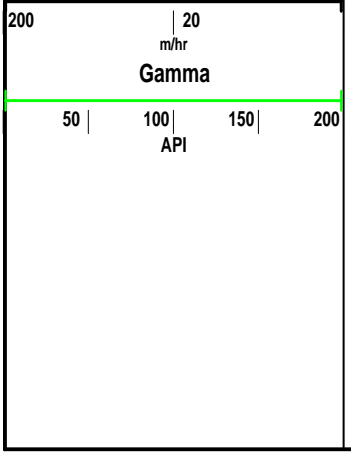
**SANDSTONE:** off wh, clr-trnsl, f-crs, mnr v crs, mod srt, sbang-sbrnnd, wk sil cmt, mnr off wh arg mtrx, rr pyr nods, lse cln gr, mnr fri, fr inf por, p vis por, no fluor

**SILTSTONE:** m-brnsh gry, mnr dk brn gy, arg i/p, rr carb spks, sft frm, sbblky-blky

**SANDSTONE:** lt gy, off wh, clr-trnsl, f-m gr, mod srt, sbang-sbrnnd, wk calc & sil cmt, mnr lt gry-off wh arg mtrx, mnr nod pyr, tr f gr glauc, fri f gr agg, fr inf por, no fluor

### HENRY-2 FORMATION EVALUATION LOG

WOB		LITHOL	INTERP	RESISTIVITY		CHROMATOGRAPH		CUT FLUOR	CALC	REMARKS
ROP				Resistivity (shallow)		Total Gas				
10	20			2	20	1	10	0		
MD meters : 40				ohm.m		unit		100		
								Dolomite		



RETIFIED LITHOLOGY

